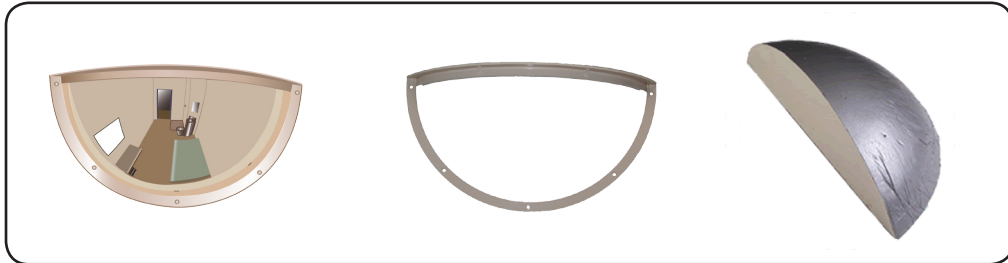


DuraVision™ Convex Mirror Product Sheet:



Situation Images:



▶ Cell Observation



▶ Dayrooms and Visitation Areas



▶ Safe Inmate Inspection

Half Dome Polycarbonate

The Half Dome is ideal for use in cells, day rooms, visitation areas, or any other area that requires wide area surveillance. It is also perfect at T-Junctions, eliminating blind spots around corners.

Features

- Virtually indestructible and unbreakable, mirror quality polycarbonate face
- Pure reflective coating
- Powder coated steel frame with unique tamper-proof design
- Recessed, tamper-proof fixings
- Optional foam insert to enhance strength
- Can be used in conjunction with CCTV to enhance effectiveness & safety

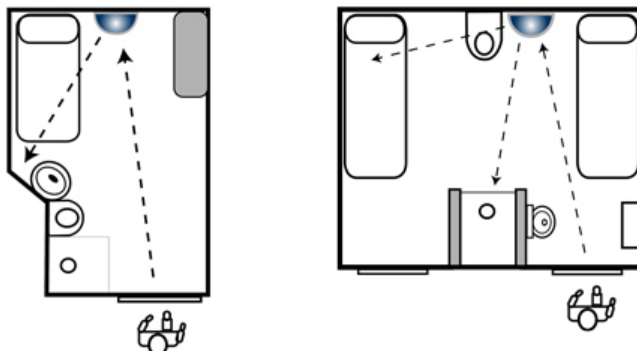
Suitable Uses

- In cells for safe inspection
- Day rooms and visitation areas
- T-Junctions in corridors

Specifications

Code	Size	View Distance	Mirror Face	Frame	Mounting Holes
17520HD	450x225mm	Under 6m	2mm Polycarbonate	Powder Coated Steel	6
17537HD	600x300mm	Up to 6m	3mm Polycarbonate	Powder Coated Steel	7
17555HD	900x450mm	Up to 9m	3mm Polycarbonate	Powder Coated Steel	10

Positioning in Cell



DuraVision™ Mirror Systems

Find our more about the great range of DuraVision Mirror Systems at our website...



www.duravision.net
www.correctionsmirror.com